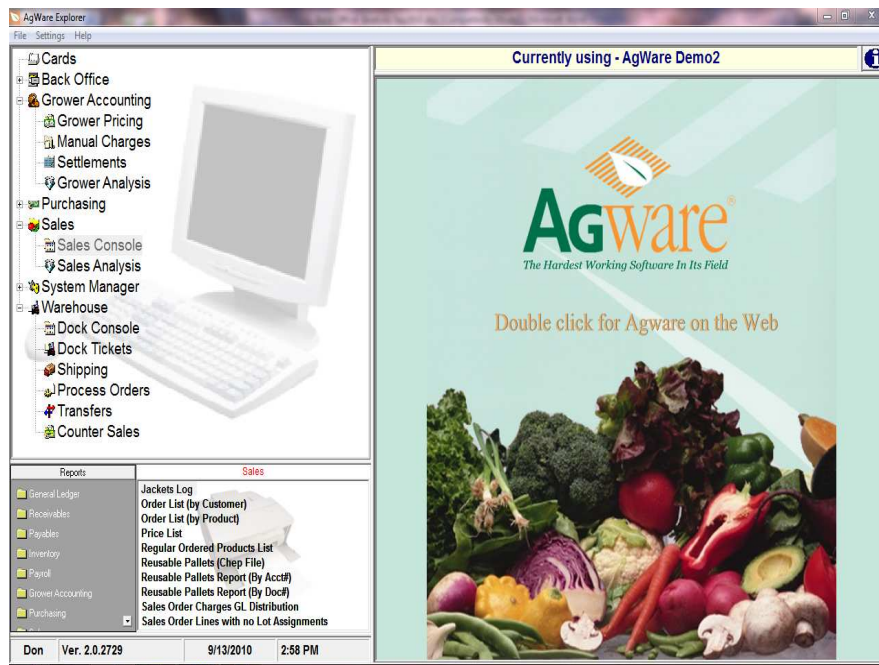


# Back Office

*The Hardest Working Software In Its Field* wouldn't be that without a great financial part. This is where you print invoices, receive payment, match vendor invoices, make payments for purchases, reconcile bank accounts, and take care of all other financial processes your business requires. Transaction view enables you to look up invoices or vouchers and then, from lot assignments or inventory receipts on these documents, drill down further to lot history and initial receiving tickets.

Although the center of activity is the Sales Console, we understand that you must have a highly functional financial system and **AgWare** makes that possible. The transactions for each sale, shipment, receiving, and all other actions affecting your inventory, are automatically documented by the system. Defaults set up in the System Manager enable you to track accurately all your records as each account transaction occurs.



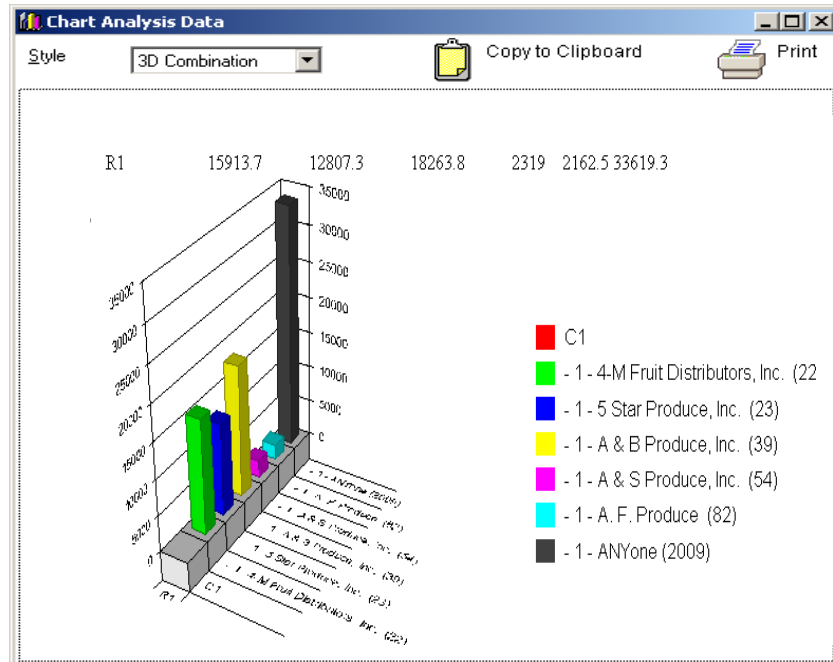
*AgWare Back Office Selection Tree Sub-components and Report List*

# Analysis Reporting

In addition to system generated reports, Sales, Purchasing, and Grower Accounting components each offer an analysis tool that enables setup of user-defined reports that combine a wide array of parameters to print, export, or display in graphical format.

Location	Billing Name	Date	Total	Qty	Cost
1	2M Sales (17)		\$755.00	96	
	4 Star Tomato, Inc. (21)		\$660.65	86	
	4-M Fruit Distributors, Inc. (22)	06/27/2002	\$10,640.00	910	
		08/12/2002	(\$2.50)	0	
		08/25/2002	\$0.00	0	
		09/02/2002	\$182.40	10	
		09/16/2002	\$100.00	8	
		09/17/2002	\$4,981.75	499	
		09/18/2002	\$12.00	1	
			\$15,913.65	1,428	
	5 Star Produce, Inc. (23)		\$12,807.25	1,191	
	A & B Produce, Inc. (39)	08/25/2002	\$746.25	25	
		09/03/2002	\$2,900.00	300	
		09/10/2002	\$11,217.50	655	
		09/16/2002	\$3,400.00	300	
			\$18,263.75	1,280	
	A & S Produce, Inc. (54)		\$2,319.00	194	
	A. F. Produce (82)		\$2,162.50	175	
	ANYone (2009)		\$33,619.31	3,913	
	Adams Produce, Inc. (188)	08/25/2002	\$1,768.75	125	
			\$1,768.75	125	
	Albertson's Produce & Floral Procurement Service (442)	08/25/2002	\$1,510.00	100	
			\$55,172.00	1,740	

The parameters picked for inclusion in the analysis can be expanded or collapsed to change views



AgWare Sales Analysis by product, Chart View

ProWare Services, LLC  
[www.ProWareServices.com](http://www.ProWareServices.com)

PO Box 4224  
 813.752.7952 Office

Plant City, FL 33563-0021  
 813.704.4803 Fax

This document is for informational purposes only, all content is subject to change, and ProWare Services, LLC makes no warranties, neither expressed nor implied. Copyright © 2009 ProWare Services, LLC. All rights reserved.